

# Sequoia Hospital Guest House



Welcome to the Sequoia Hospital Guest House! Use of the Guest House is provided on a first come-first serve basis and financially supported by the generosity of the Sequoia Hospital Foundation for families in need and those living outside of a 50 mile radius.

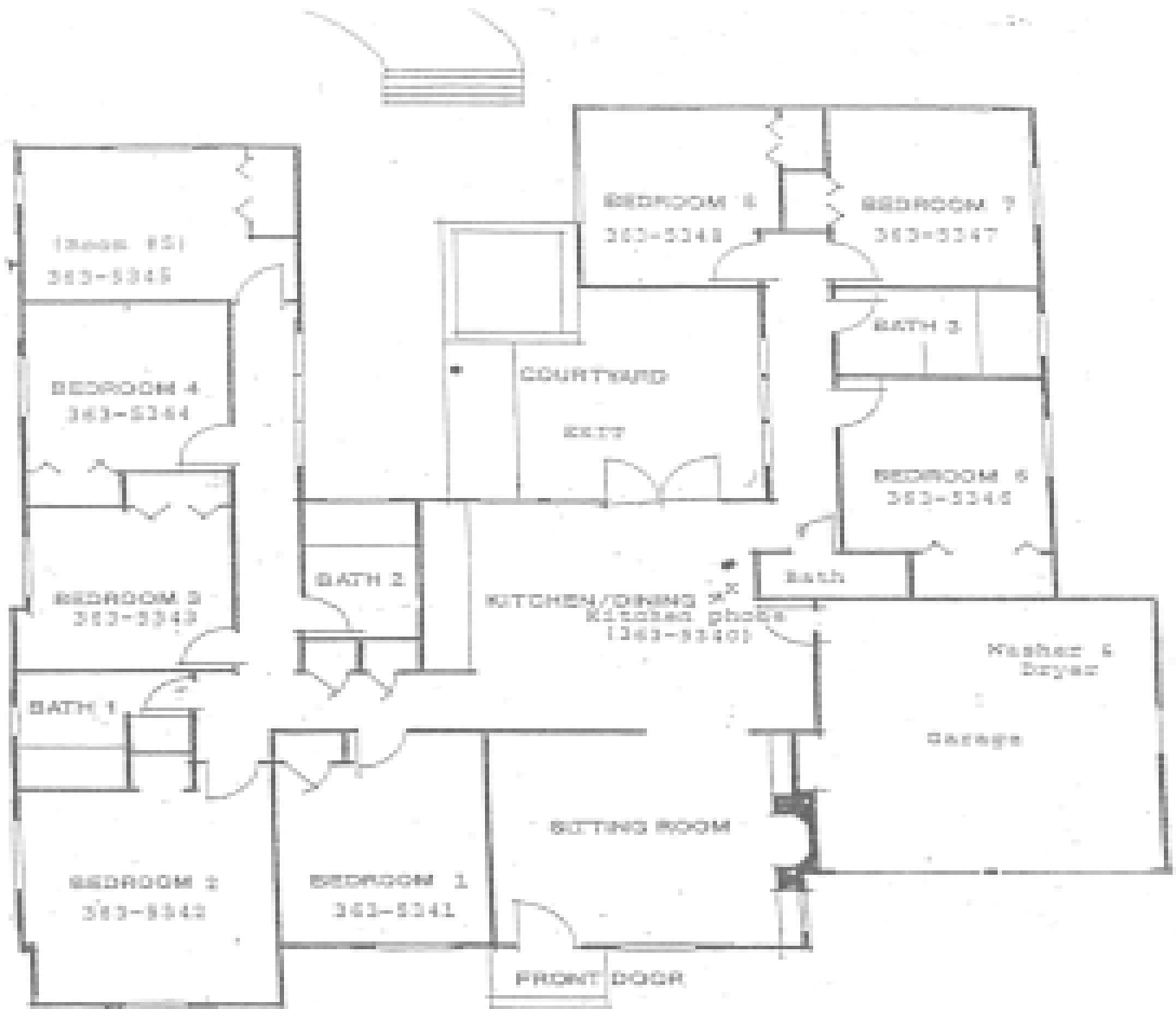
The Guest House has 8 private bedrooms consisting of 2 twin beds per room (only 2 guests per room), living room, kitchen, garage, patio and 3 full baths and 1 half bath (no private bathrooms). The Guest House is equipped with linens and a wireless internet connection and a washer and dryer are provided for guests.

For reservations, questions, or assistance please contact the Guest House at [sequoiaguesthouse@chw.edu](mailto:sequoiaguesthouse@chw.edu) or 650-261-6848.

# Interior Photos of the Guest House



# Guest House Floor Plan

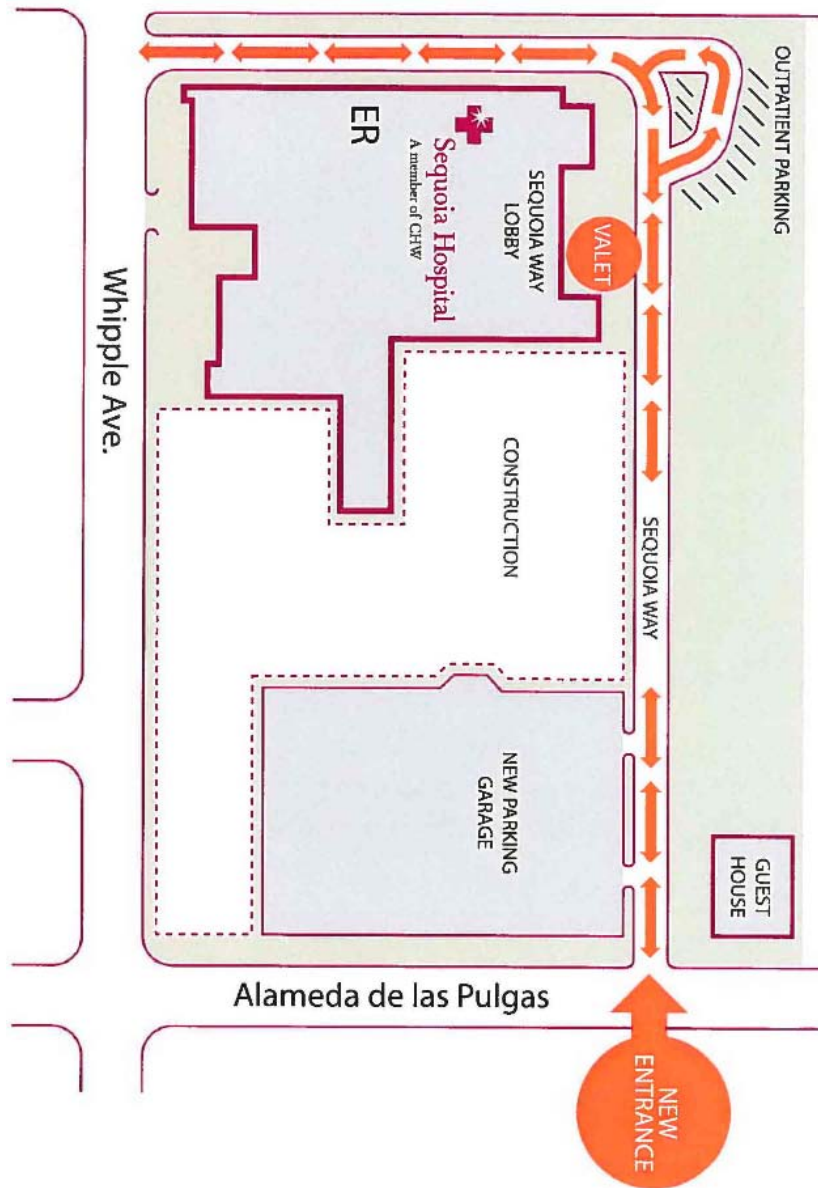


# Guest House Guidelines

- On a first come-first served basis the guesthouse is available for up to a 5-day stay. Extensions are granted based on availability.
- 8 private bedrooms consisting of 2 twin beds per room (only 2 guests per bedroom). To serve all of our patients at Sequoia, we can only provide one room per family. There are **NO** private bathrooms. **Please note that other families may be staying in the Guest House at the same time you are.**
- **No children under 16** may stay in the guest house.
- **No pets allowed.** Burning candles are not allowed.
- The Guest house is equipped with a wireless internet connection.
- A washer and dryer are provided for guests and located in the garage.
- **No parking allowed in the guest house driveway.** Parking is available in Sequoia Hospital's parking garage. Free valet parking is also available.
- Access to the hospital shuttle is available 24 hours per day. Inside the hospital dial 0. From the guesthouse or cell phone call the general hospital number 369-5811. Call 15 minutes prior to when the ride is needed. Guests will be dropped off and picked up in the front of the guest house. You may also take the hospital shuttle to the parking garage and walk to and from the guest house.
- **The guest house is not wheelchair accessible.** All guests must be independent with their mobility.
- **Sequoia Hospital does not allow smoking in the guesthouse or on the campus.**
- Provided on a first come-first serve basis and financially supported by the generosity of the
- Check in time is 3pm-4:30pm at the reception desk in the main lobby. Check out time by 12 noon.
- **Guesthouse check-in after 5:00 p.m. daily, weekends and holidays is with the Sequoia Operator on duty..**
- A Guest without a reservation checking in after 4:30pm will be assigned a room (if available) for one night only.
- Extension requests or drop in guests are handled on a day to day basis after 9am in the lobby.
- If the patient's surgery is postponed or cancelled. Please contact Guest Services (650-261-6848) so we may allow another family to use your reserved room.
- For all reservations, questions, or assistance contact the Guest House at

**Sequoiaguesthouse@chw.edu or 650-261-6848.**

# Hospital Pavilion Construction



As our guest, your comfort and safety are very important to us. The hospital security shuttle is available 24 hours per day. Please call the main hospital number at 650-369-5811 and request security to shuttle to and from the guest house. If you are calling from within the hospital please dial 0. During business hours the shuttle makes continuous trips up and down Sequoia Way to the parking garage.

Please contact the Guest House at 261-6848 or the hospital operator at 369-5811 with any questions.